

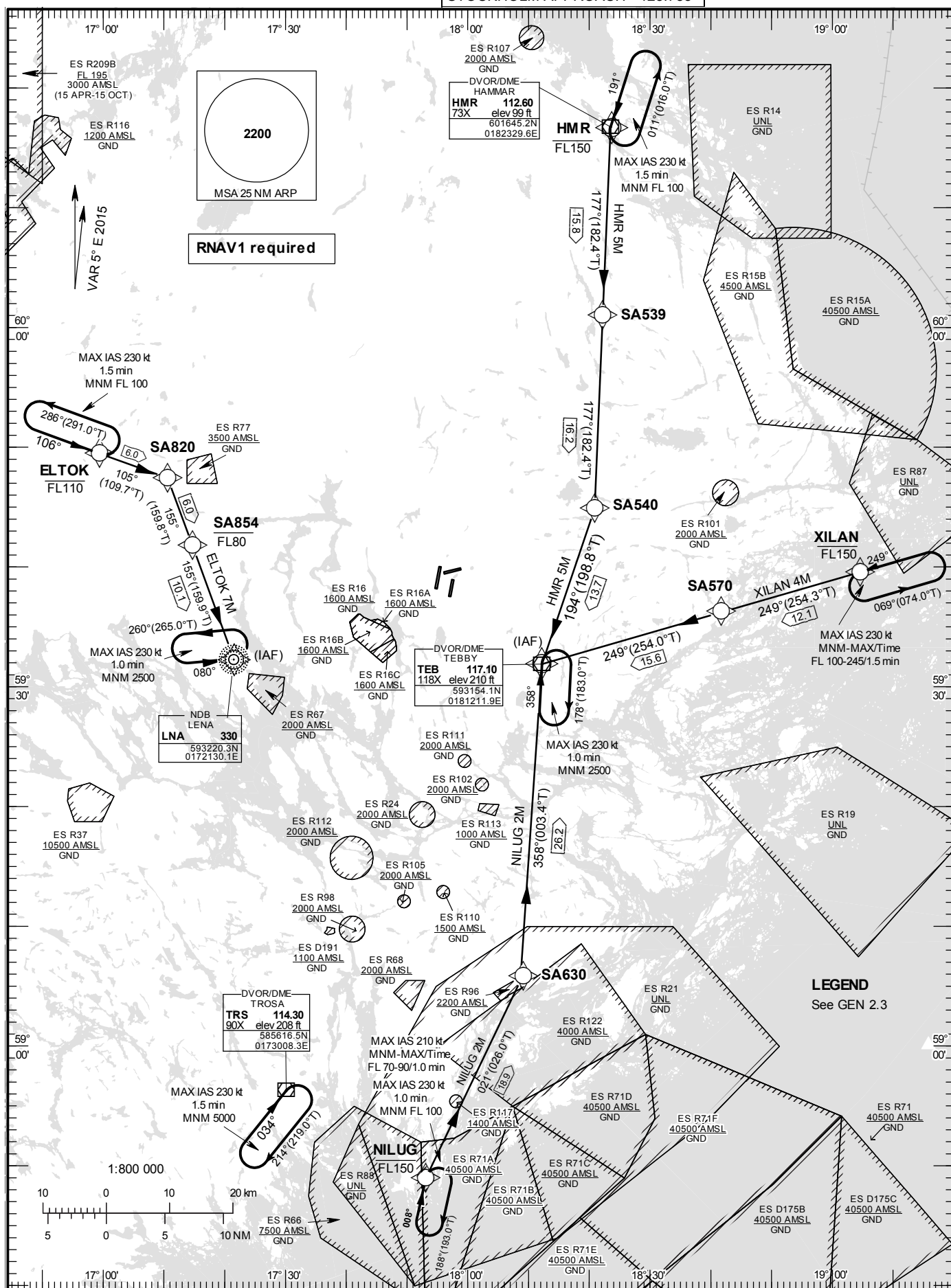
STOCKHOLM/Arlanda

RNAV (DME/DME or GNSS)
STAR RWY 01L/01R

STANDARD INSTRUMENT ARRIVAL CHART (STAR) - ICAO

HGT and ALT in ft
BRG are MAG (True)
TA 5000 ft AMSL

ARLANDA TOWER	118.505
ARLANDA ATIS ARR	119.005
STOCKHOLM APPROACH	123.755



CHANGE: Editorial

STOCKHOLM/Arlanda**Prescribed Coding of RNAV STAR for RWY 01L/01R****REMARK**

Aircraft to STOCKHOLM/Arlanda shall not be operated at an airspeed of more than 250 kt IAS below FL100 unless otherwise instructed.

STARs to RWY 01L and RWY 01R are identical. Which RWY to be used will be assigned by ATC in the inbound clearance.

Clearance limit is normally the IAF.

From IAF aircraft will be radar vectored to final approach.

In case of radio communication failure, see AD 2.22 para 3.

All RNAV STARs are based on GNSS or DME/DME for position update.

ELTOK 7M

Path Term	Waypoint Identifier	Fly-over	Course °M(°T)	Dist (NM)	Turn Dir	Rest Alts (ft AMSL)	Speed Limits (kt)	VPA/RDH (°/ft)	Rec Navaid	Navigation Specification
IF	ELTOK	-	-	-	-	-FL110	-	-	-	RNAV 1
TF	SA820	-	105°(109.7°)	6.0	-	-	-	-	-	RNAV 1
TF	SA854	-	155°(159.8°)	6.0	-	-FL80	-	-	-	RNAV 1
TF	LNA	-	155°(159.9°)	10.1	-	-	-	-	-	RNAV 1

STAR instruction: ELTOK (FL110 or below) – SA820 – SA854 (FL80 or below) – LNA

HMR 5M

Path Term	Waypoint Identifier	Fly-over	Course °M(°T)	Dist (NM)	Turn Dir	Rest Alts (ft AMSL)	Speed Limits (kt)	VPA/RDH (°/ft)	Rec Navaid	Navigation Specification
IF	HMR	-	-	-	-	-FL150	-	-	-	RNAV 1
TF	SA539	-	177°(182.4°)	15.8	-	-	-	-	-	RNAV 1
TF	SA540	-	177°(182.4°)	16.2	-	-	-	-	-	RNAV 1
TF	TEB	-	194°(198.8°)	13.7	-	-	-	-	-	RNAV 1

STAR instruction: HMR (FL150 or below) – SA539 – SA540 – TEB

NILUG 2M

Path Term	Waypoint Identifier	Fly-over	Course °M(°T)	Dist (NM)	Turn Dir	Rest Alts (ft AMSL)	Speed Limits (kt)	VPA/RDH (°/ft)	Rec Navaid	Navigation Specification
IF	NILUG	-	-	-	-	-FL150	-	-	-	RNAV 1
TF	SA630	-	021°(026.0°)	18.9	-	-	-	-	-	RNAV 1
TF	TEB	-	358°(003.4°)	26.2	-	-	-	-	-	RNAV 1

STAR instruction: NILUG (FL150 or below) – SA630 – TEB

XILAN 4M

Path Term	Waypoint Identifier	Fly-over	Course °M(°T)	Dist (NM)	Turn Dir	Rest Alts (ft AMSL)	Speed Limits (kt)	VPA/RDH (°/ft)	Rec Navaid	Navigation Specification
IF	XILAN	-	-	-	-	-FL150	-	-	-	RNAV 1
TF	SA570	-	249°(254.3°)	12.1	-	-	-	-	-	RNAV 1
TF	TEB	-	249°(254.0°)	15.6	-	-	-	-	-	RNAV 1

STAR instruction: XILAN (FL150 or below) – SA570 – TEB